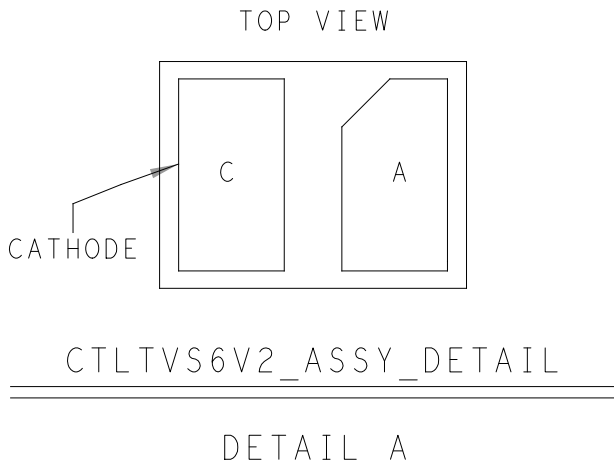



REVISIONS			
REV	DESCRIPTION	DATE	APPROVED
A	INITIAL RELEASE	07FEB24	C.CARBUNARU

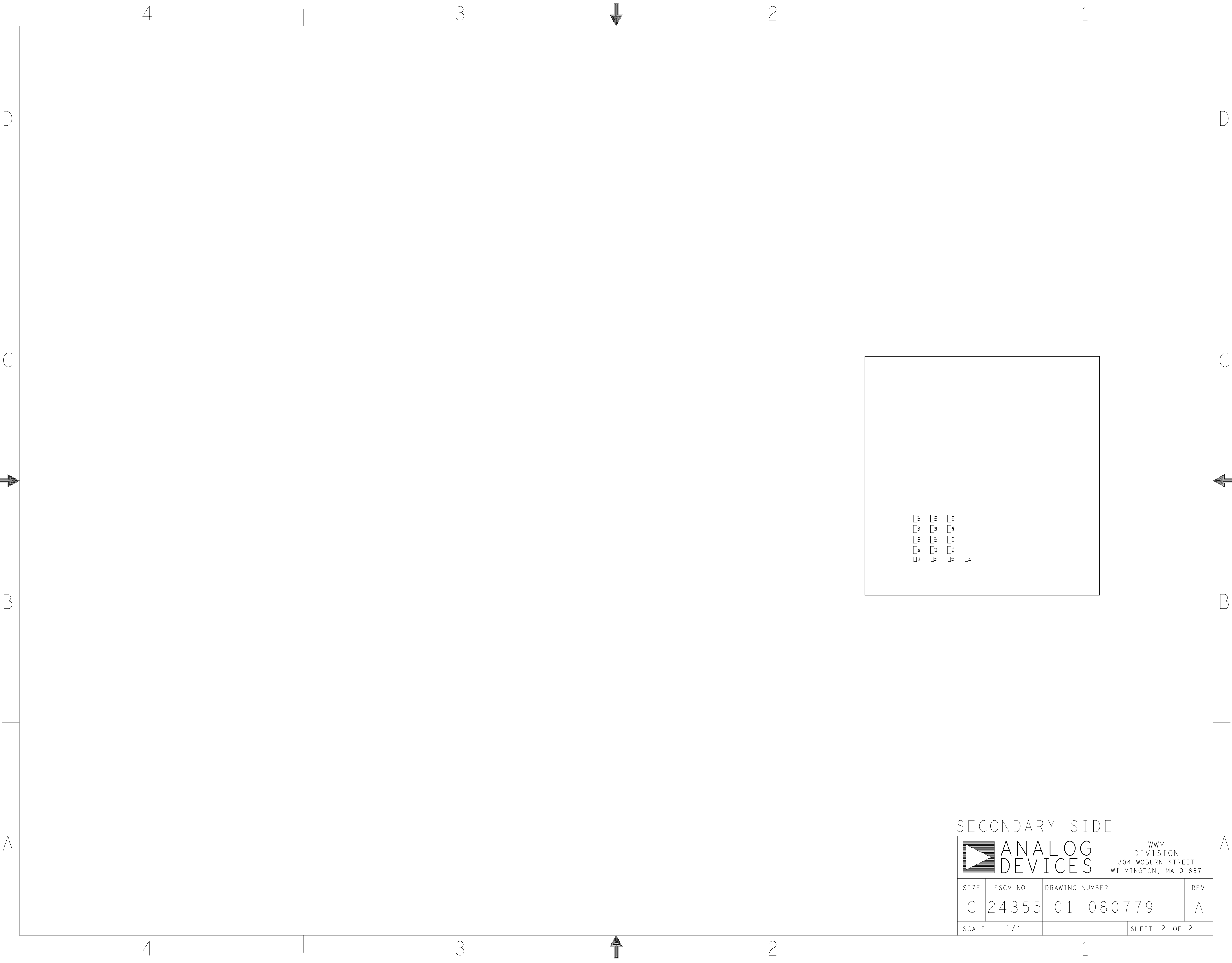
ASSEMBLY NOTES:

- BOARD ACCEPTABILITY PER ANALOG DEVICES, INC. SPECIFICATION TST00119 (LATEST REVISION).
- REPAIRS PER IPC-7711/21(LATEST REVISION) ARE ALLOWED.
- REPAIRS ARE NOT ALLOWED IN SOLDERMASK FREE AREAS ON EITHER SIDE OF THE BOARD.
- RoHS COMPLIANCE: ASSEMBLY VENDOR SHOULD ASSURE COMPLIANCE WITH LEAD-FREE AND RoHS PCB ASSEMBLY STANDARDS (EU RoHS DIRECTIVE 2002/95/EC).
- BOARDS TO BE SHIPPED SINGULATED AFTER ASSEMBLY PROCESS.
- SMOOTHEN EDGES AND FREE FROM BURRS AFTER DEPANELIZATION.



PRIMARY SIDE

UNLESS OTHERWISE SPECIFIED DIMENSIONS ARE IN INCHES TOLERANCES DECIMALS    FRACTIONS    ANGLES .XX    -.010    --1/32    -- 2 .XXX    -.005 .XXXX    -.0050			APPROVAL		DATE		<div><div></div><div>ANALOG DEVICES</div></div> <div>WWM DIVISION 804 WOBURN STREET WILMINGTON, MA 01887</div>							
			TEMPLATE ENGINEER											
MATERIAL			HARDWARE SERVICES M.VALE		07FEB24		TITLE  ASSEMBLY  ADE9430/MAX32650  CUSTOMER EVAL BOARD Z							
			HARDWARE SYSTEMS											
FINISH			TEST ENGINEER											
			COMPONENT ENGINEER N.CATALAN		07FEB24									
			TEST PROCESS											
			HARDWARE RELEASE K.JABATAN		07FEB24									
DO NOT SCALE DWG			DESIGNER J.MALAYBA		07FEB24		SIZE		FSCM NO		DRAWING NUMBER		REV	
			PTD ENGINEER C.CARBUNARU		07FEB24									
			CHECKER				C		24355		01-080779		A	
							SCALE		1 / 1				SHEET    1 OF 2	



SECONDARY SIDE

<div><div><div></div></div><div>ANALOG DEVICES</div></div> <div>WWM DIVISION 804 WOBURN STREET WILMINGTON, MA 01887</div>			
SIZE	FSCM NO	DRAWING NUMBER	REV
C	24355	01-080779	A
SCALE	1 / 1	SHEET 2 OF 2	

REVISIONS			
REV	DESCRIPTION	DATE	APPROVED
A	INITIAL RELEASE	07FEB24	C.CARBUNARU


## HOLE TOLERANCE

UNLESS SPECIFIED  
PLATED: +/- 3 MILS  
NON PLATED: +/- 2 MIL

DRILL CHART: TOP to BOTTOM				
ALL UNITS ARE IN MILS				
FIGURE	SIZE	PLATED	QTY	TOLERANCE/NOTES
+	10.0	PLATED	799	DIA MAX
□	16.0	PLATED	16	
○	35.0	PLATED	5	
○	40.0	PLATED	38	
◇	60.0	PLATED	12	
△	65.0	PLATED	10	
A	40.0	NON-PLATED	2	
B	135.0	NON-PLATED	5	
⊖	63.0x28.0	PLATED	2	
⊖	79.0x28.0	PLATED	2	

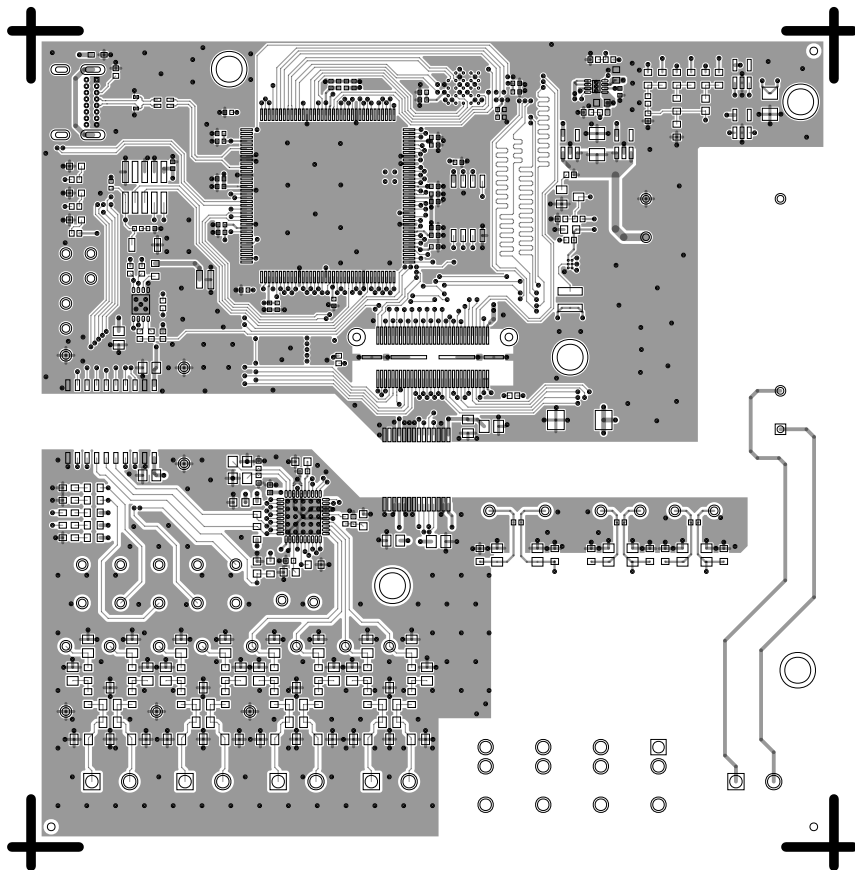
SEE NOTE 20

## PRIMARY SIDE

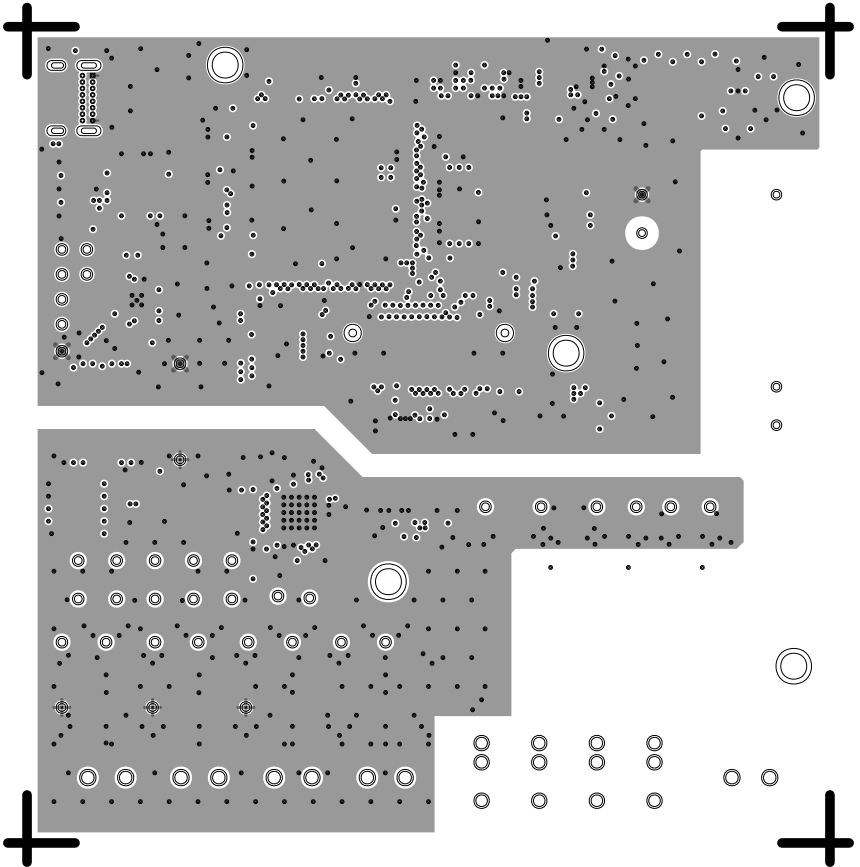
UNLESS OTHERWISE SPECIFIED DIMENSIONS ARE IN INCHES			APPROVAL		DATE		<div>ANALOG DEVICES</div> <div>WWM DIVISION 804 WOBURN STREET WILMINGTON, MA 01887</div>											
TOLERANCES			TEMPLATE ENGINEER															
DECIMALS	FRACTIONS	ANGLES	HARDWARE SERVICES		07FEB24													
.XX --.010	--1/32	-- 2	M.VALE															
.XXX --.005			HARDWARE SYSTEMS				TITLE  FABRICATION ADE9430/MAX32650 CUSTOMER EVAL BOARD Z											
.XXX --.0050																		
MATERIAL			TEST ENGINEER															
			COMPONENT ENGINEER N.CATALAN		07FEB24													
			TEST PROCESS															
			HARDWARE RELEASE K.JABATAN		07FEB24		SIZE C											
FINISH			DESIGNER J.MALAYBA		07FEB24						FSCM NO 24355							
			PTD ENGINEER C.CARBUNARU		07FEB24										DRAWING NUMBER 09-080779			
			CHECKER															
DO NOT SCALE DWG							SCALE 1/1				SHEET 1 OF 2							



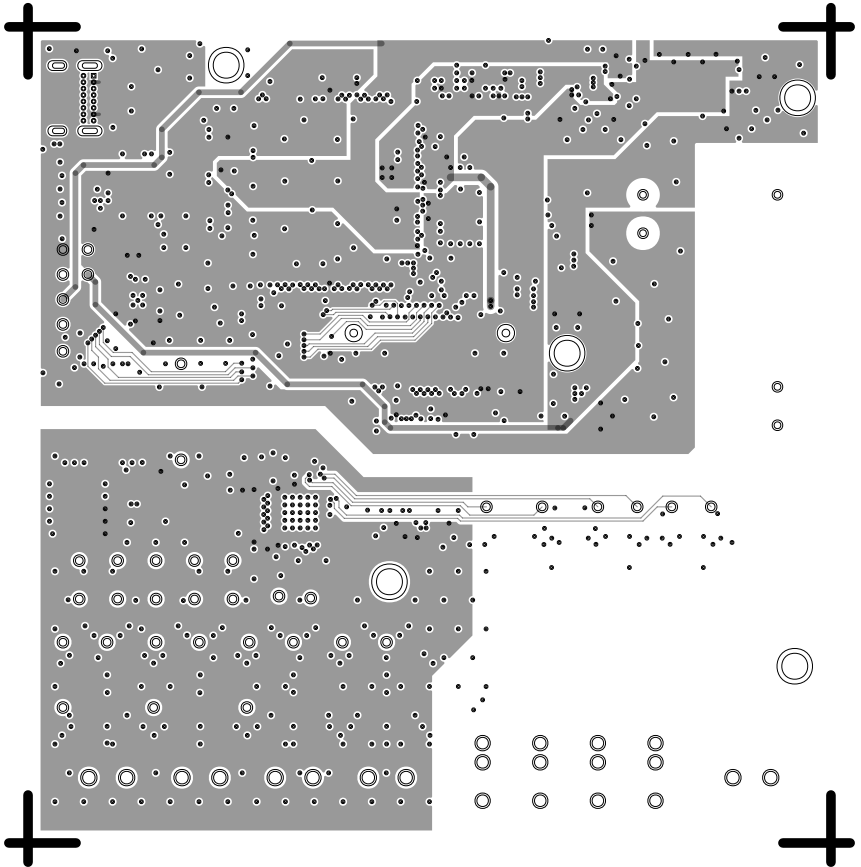
L1 PRIMARY  
08-080779-01  
REV A



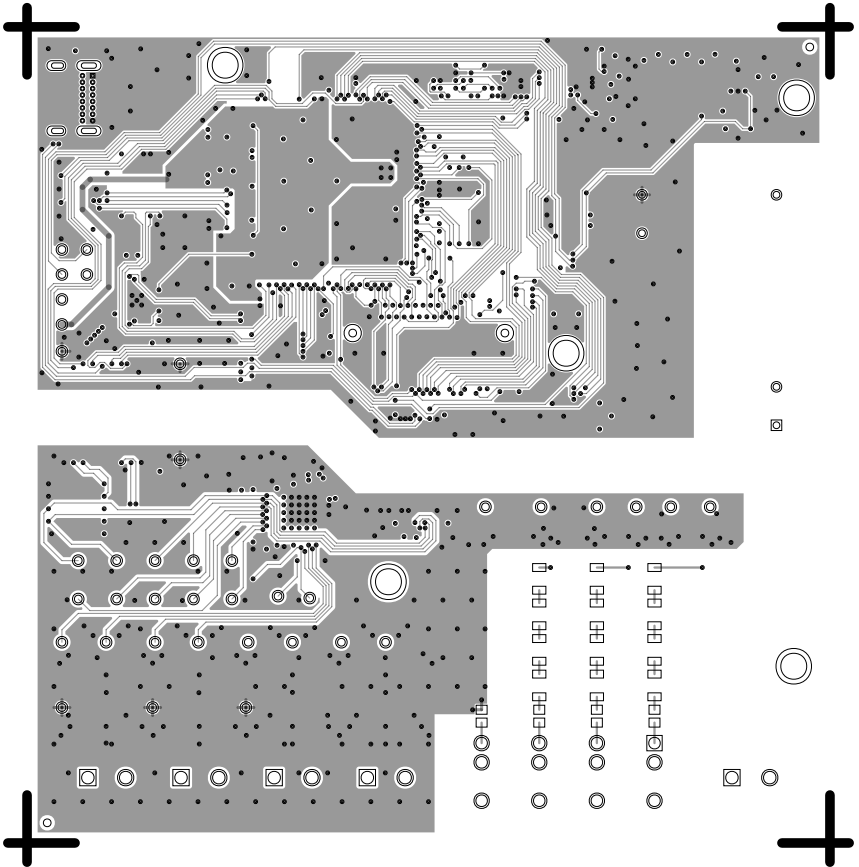
L2 GND  
08-080779-07  
REV A



L3 PWR  
08-080779-08  
REV A



L4 SECONDARY  
08-080779-02  
REV A

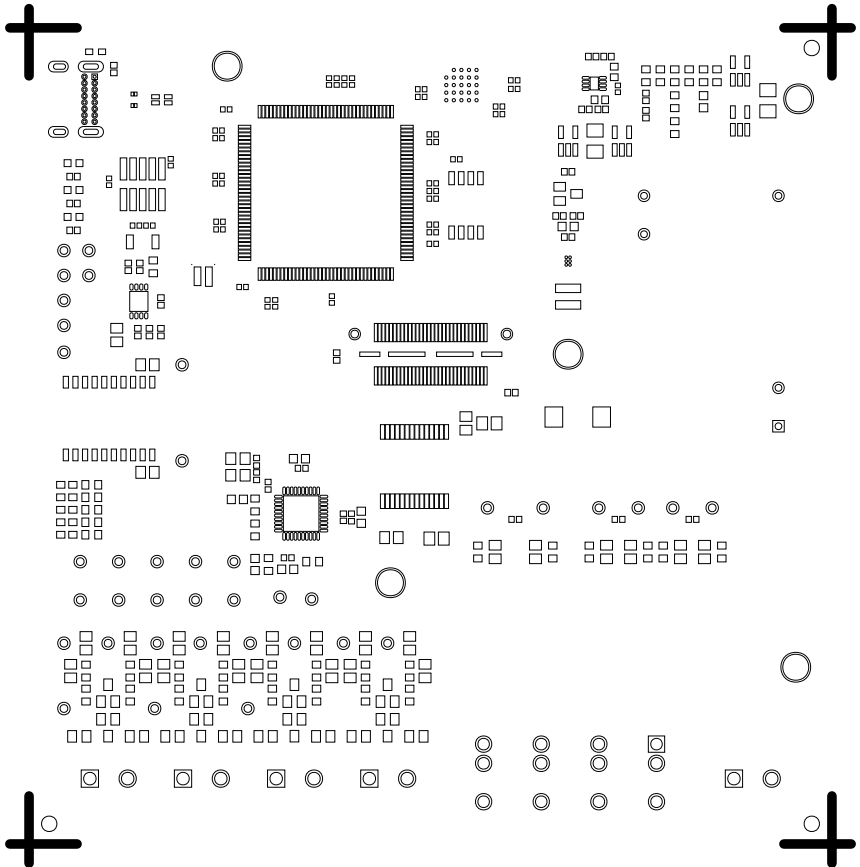




SOLDERMASK PRIMARY

08-080779-04

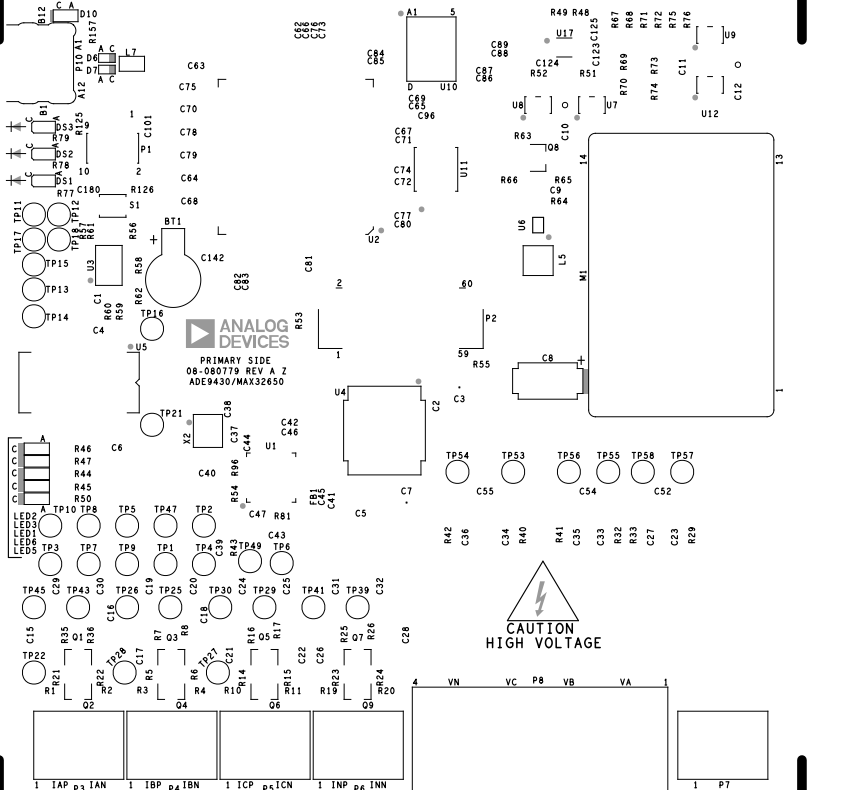
REV A



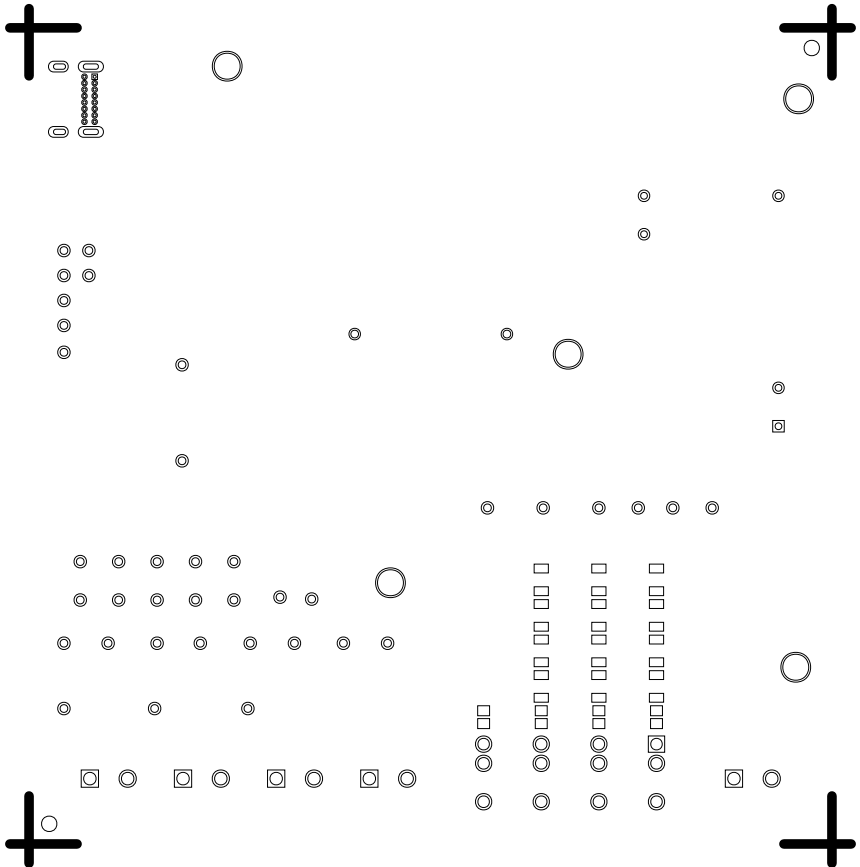
# SILKSCREEN PRIMARY

08-080779-03

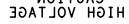
REV A



## REV A



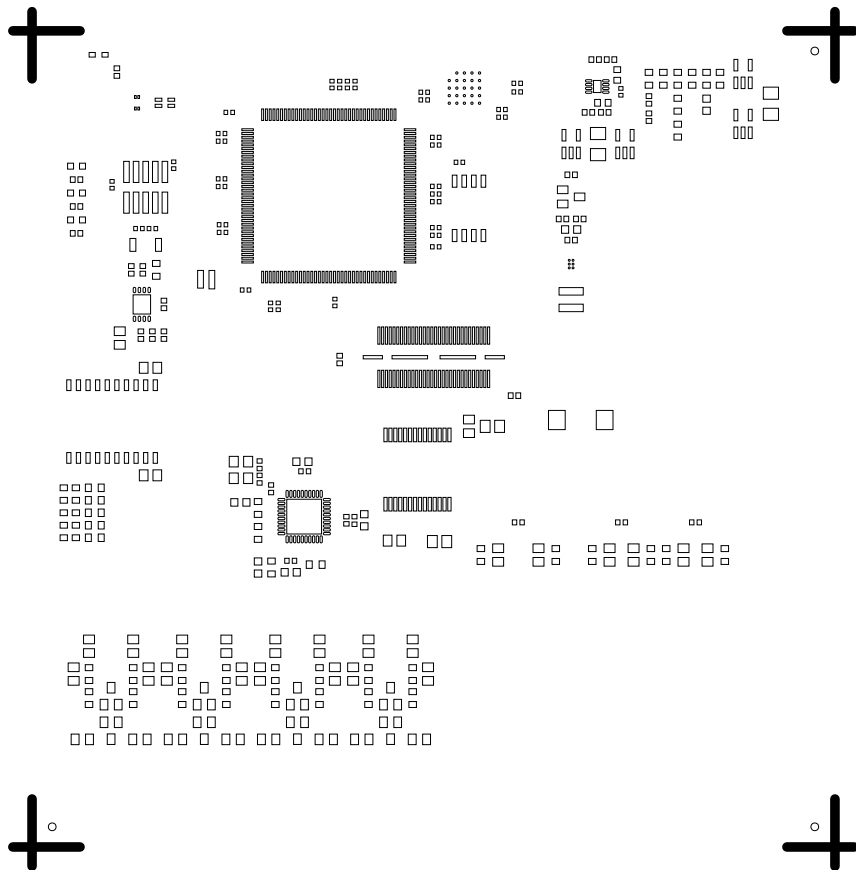
+

[illegible]

# PASTEMASK PRIMARY

08-080779-09

REV A



PASTEMASK SECONDARY  
08-080779-10  
REV A

